



中国 电信（欧洲）有限公司
China Telecom (Europe) Ltd.



SD-WAN Essentials and SD-WAN Plus

Global Network Agility with CTE Next Generation solutions

www.chinatelecomeurope.com

Are you ahead of the game, or trying to keep up?

- Is your enterprise WAN optimised for your business use? How secure is your WAN and its application control? Can it adapt to your enterprise's needs in a crisis?
- As your business grows, so do the challenges for your network. Your organisation needs to keep pace with rapidly advancing digital and technological change. Software-defined Wide Area Network (SD-WAN) technologies promise greater flexibility and agility for business networks. That's why enterprises put SD-WAN at the heart of their digital development strategies for cloud migration and IoT-connected equipment.
- Comprehensive SD-WAN services from China Telecom Europe Ltd. (CTE) can prepare your business for the move to virtual computing and cloud computing across multiple territories. More importantly, they help your business navigate through future changes, reduce harm from unforeseen events and keep you ahead of the game.



China-compliant

Work with China specialists, with the experience, knowledge and infrastructure to help your ventures succeed in China. CTE SD-WAN solutions help your global enterprise launch and expand in the Chinese market. All of our services are fully compliant with the stringent requirements of Chinese cyber security laws.



Tailored

Customise CTE's SD-WAN solutions to meet your individual business needs and requirements. Our services, including Bandwidth on demand, Zero-Touch deployment and 24/7 on-site device replacement, let you respond quickly to unforeseen events and enable your network to adapt rapidly to new challenges.



Comprehensive

Futureproof your business with our flexible services, and choose to add additional security measures, further WAN optimisation, use of multiple mobile devices or SAAS services, to your bespoke service bundle.

How CTE's SD-WAN satisfies your global network demands

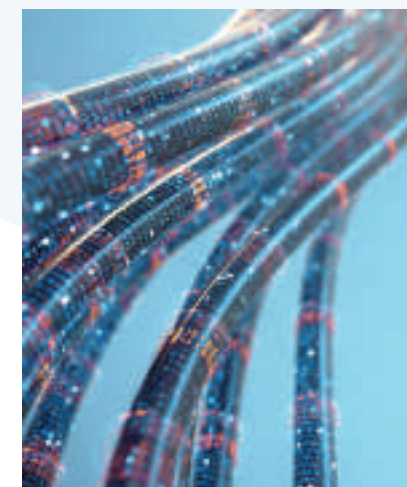
CTE's SD-WAN solution connects you to customers and branches all over the world. We deliver:

- High quality application performance
- Easy access to public cloud platforms
- Real-time adjustment to individual bandwidth on demand (BoD) and network conditions
- Reduced WAN complexity and maintenance processes
- Lower network management costs
- Improved over-all end-user experience.

Install a virtual CPE to guarantee fast delivery and make use of NFV to provide enhanced benefits and features.

Customising CTE's SD-WAN for your business

CTE's SD-WAN services adapt to your business needs. With flexible options for your organisation to develop your SD-WAN solution with our team of experts.



Over the Top SD-WAN

For businesses who want a SD-WAN overlay that uses their existing underlying telecommunications infrastructure to reduce the need for integration work

Includes:

- Design and consulting
- SD-WAN box with staging
- SD-WAN box MA
- Implementation of SD-WAN service over the top of any underlay service (Ethernet link, MPLS, DIA, 4G, fibre and more)



SD-WAN as a Service

For businesses who want to move towards an operational cost with a native cloud solution











Includes:

- Design and consulting
- SD-WAN box with staging
- SD-WAN box MA
- Last mile access types (Ethernet link, DIA, 4G and more)
- Global SD-WAN gateway (CGW)
- Global SD-WAN backbone with SLA

|||| Your SD-WAN bundle options

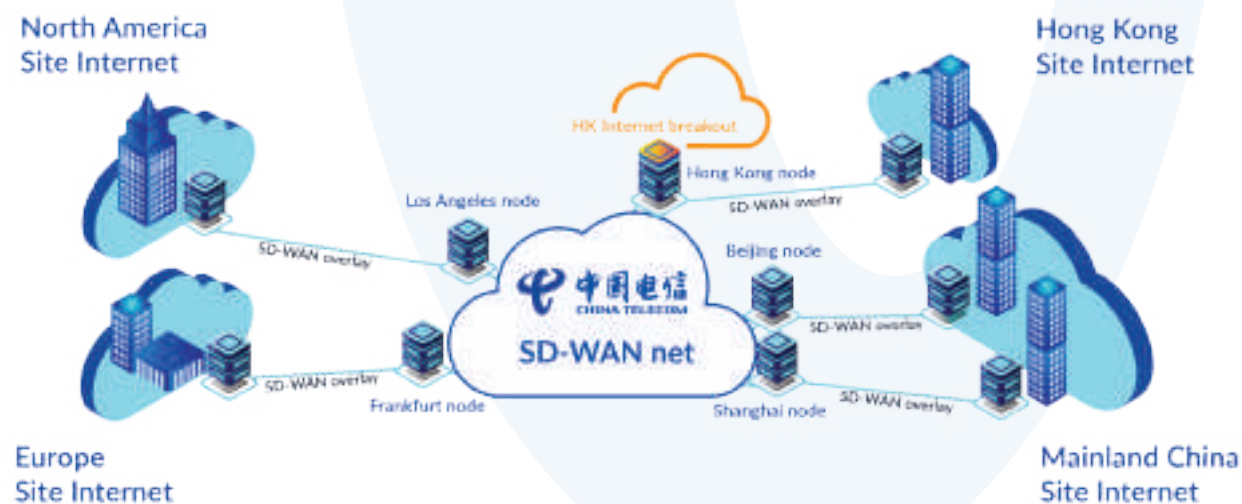
SD-WAN Essential is used, amongst other things, for site-to-site networking. This bundle includes key features not available in traditional networking products (e.g. IEPL, MPLS VPN, IPSEC VPN).

SD-WAN Plus adds extra features to the SD-WAN Essential bundle, including the ability to customise your SD-WAN network package.

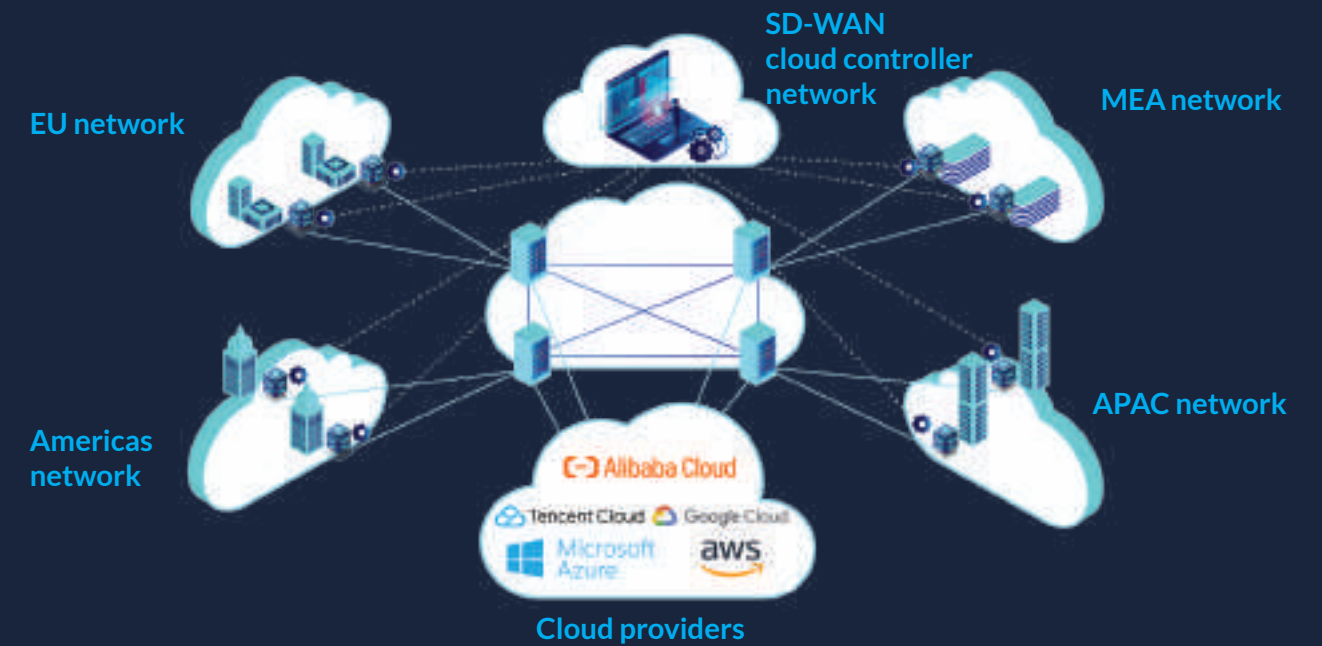
| SD-WAN Essential | SD-WAN Plus |
|---|---|
|  Multi-transport Ethernet private links, MPLS, DIA, LTE |  WAN optimisation TCP, UDP, Cache |
|  Multi-path control Dynamic path selection, overlay QoS and SLA policy |  Next Generation Firewalls IPS/IDS, content filter, anti-virus, application control, sandbox |
|  Application awareness Dynamic application steering |  Cloud connection IaaS, SaaS. |
|  Cloud orchestrator with centralised controller |  BYOD mobile |
|  Zero touch deployment |  Value added service UCaaS, O365, security |

CTE's SD-WAN will differ based on your organisation's need. Four commons scenarios are shown to illustrate our depth in capabilities. It is not exhaustive, so contact us for more information.

|||| Scenario 1: SD-WAN as a Service Essential



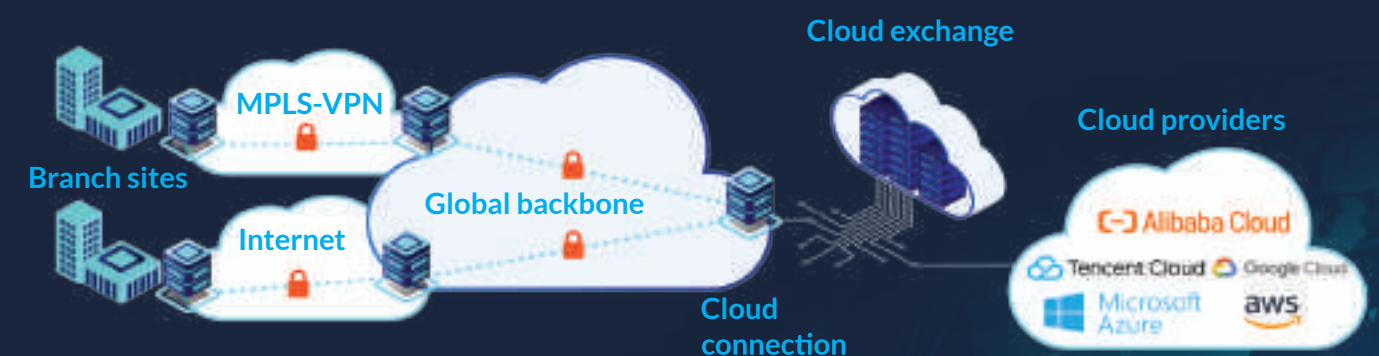
|||| Scenario 2: Over the Top SD-WAN



|||| Scenario 3: SD-WAN SaaS acceleration package



|||| Scenario 4: Multi Cloud Access based on SD-WAN



100% Bespoke Solutions

When you partner with us, everything we do is geared to your specific needs. We'll design a tailored SD-WAN solution that delivers the performance, flexibility and capabilities you demand.

- || Choose a SD-WAN as a service or an over the top solution and bundle it with our SD-WAN Plus options.
- || Ensure additional security for your organisation with Next Generation Firewall included in the SD-WAN Plus bundle.
- || Add flexibility with access for mobile users using the BYOD-package in the SD-WAN Plus bundle.
- || Adapt your business to meet the challenges of today and the future with our managed value added services and WAN optimisation.

Who is CTE?

For companies who want to grow their businesses or establish a presence in China, or for Chinese enterprises that wish to expand overseas, CTE provides integrated telecoms and communications services.

CTE is a wholly owned subsidiary of China Telecom Global (CTG), the international arm of China Telecom. CTE's unrivalled knowledge of the ideal partner for European and Asian businesses, including European multinational enterprises, Chinese enterprises in Europe, carriers, telecom service providers as well as Europe-based Chinese consumers.

CTE seamlessly connects your global business to the world's largest single marketplace. Our European-Asia Network has more terrestrial and submarine routes than any of our competitors, and domestically China Telecom owns the largest digital network in China. This results in superior lower latency, greater diversity and improved resilience when accessing business applications to and from China. CTE can bring all your international communications needs under one global contract, and give you the peace of mind that comes from knowing you're in the safe hands of industry experts.

CTE Key Facts



Extensive European-Asia Network - transiting TMP, TEA, TEA2, TEA 4, CR2, TSR, SMW3, SMW4 and SMW5 cable systems



World's largest 4G LTE FDD mobile operator (323 million mobile subscribers)



World's largest broadband operator (127 million subscribers)



Owns and operates China's over 83,000km long, covering 70% of China's territory and connecting all Chinese cities



Owns and operates ChinaNet, China's largest Internet network



Owns and operates China's largest MPLS VPN network, based on our next-generation, carrier-class, IPv6-capable Internet backbone network



Primary service provider in all 21 southern provinces in China



Owns comprehensive trans-Pacific cable systems, including China-U.S., Japan-U.S., SE-AME-WE3 in APCN2, SMW3, SMW5, FASTER, Flag, TEA, etc.



International bilateral connectivity to 100+ countries



More than 670,000 professionals employed around the world

#132

on Fortune's Global 500 in 2023



Contact CTE today to learn more

Call: +44 020 7537 7156 Email: info.europe@chinatelecomglobal.com
Carrier Business Department: +44 020 3840 3273



中国电信 (欧洲) 有限公司
China Telecom (Europe) Ltd.

www.chinatelecomeurope.com

Head Office

United Kingdom

11th Floor, Exchange Tower,
1 Harbour Exchange Square,
London, E14 9GE

Regional Offices and Support Centres

Austria
Denmark
Greece
Italy
Poland

Spain
Turkey
Belarus
France
Hungary

Luxembourg
Russia
Sweden
Czech Republic
Germany

Ireland
Netherlands
Serbia
Switzerland