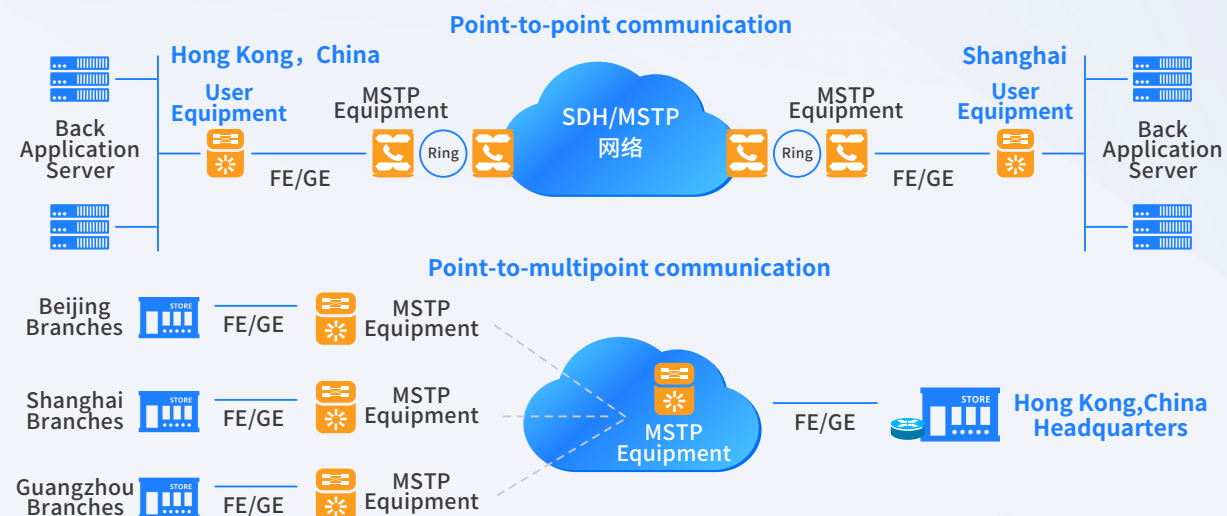


05 System diagram illustration



06 About Us

China Telecom Global Limited (CTG) was established in 2012 and headquartered in Hong Kong as a wholly-owned subsidiary of China Telecom Co., Ltd. As for now, CTG has a presence in 53 countries and markets, with business spanning the Asia-Pacific, Europe, the Middle East, Africa, and the Americas. Leveraging its vast network resources of 52 submarine cables with over 113T in intercontinental capacity, 261 Points-of-Presence, and 26 proprietary data centres around the world, CTG has become a global player with an extensive network of service branches and communications infrastructure.

International carriers, multinational enterprises and overseas Chinese customers comprise the majority of CTG's global customer base. CTG provides its customers with tailored and cost-effective integrated telecoms solutions, suited to different business needs. CTG solutions comprise diverse telecom services, including internet direct access, internet transit, data services, broadband, unified communications, internet data centers, cloud computing, ICT services, fixed-line and mobile services, professional services, industry solutions, telecom operation consultancy and service outsourcing.

08 Global Accolades



In the Fortune Global 500 for 2023
Ranked 132nd



In the 2023 Forbes Global 2000 list
Ranked 146th



International CRE Awards
Eleven consecutive years of
winning the International Customer
Relationship Excellence Award



CC-global Awards-2023
Innovative Virtual Point
Of Presence (vpop)



CC-Global Awards-2022
B2B Enterprise Service
of the Year



Global Carrier Awards-2021
Best IoT Initiative

China Telecom Global Limited

Mainland China Hotline: 4008-852310

Hong Kong SAR Hotline: (852) 3100 0000

Online Customer Service:

Please visit 'China Telecom Global' official WeChat account

Email: cs@chinatelecomglobal.com

Official website: www.chinatelecomglobal.com



China Telecom Global



@chinatelecomglobal



CTG Official WeChat
Account



CTG Official Website

As of April 2024



IEPL Connectivity



01 Overview

In the digital era, enterprises regardless of size or industry run lots of high-bandwidth applications in multiple sites around the world. Many of them are seeking reliable, dedicated and low-latency connections to meet their rising business demands and data traffic.





China Telecom (CT) provides quality and effective global networking solutions through Ethernet Service to ensure a wide range of networking options for customers. International Ethernet Private Line (IEPL) is an end-to-end, Ethernet-based network services to meet the performance, speed and security needs of enterprise and carrier customers. IEPL leverages Ethernet over SDH or OTN technologies to offer dedicated, cost-effective and high-performing connectivity.

Ethernet over SDH or OTN provides customers with long distance/transnational Ethernet Private Line service with access rates between 2M and 10G and achieves point-to-point or point-to-multipoint communication. It also supports VLAN transparency, QinQ and Jumbo Frame (up to 9100 bytes).

02 Key Features

 <p>MEF Certification</p> <p>Obtain the global MEF9 and MEP14 certifications.</p>	 <p>Leading in Mainland China</p> <p>Provide full coverage to cities across the nation.</p>
 <p>Industry-leading SLA</p> <p>Low latency, Circuit Availability more than 99.9%, MTTR less than 4 hours.</p>	 <p>Guaranteed NoC</p> <p>7*24*365 services team providing global customers with guaranteed services.</p>
 <p>Global Coverage with Flexible Bandwidth</p> <p>Extensive global network with over 69 Points-of-Presence (PoPs) connecting major cities in the world. A variety of bandwidth options to address diverse bandwidth needs in different locations.</p>	 <p>End-to-end Service Management</p> <p>Troubleshooting and customer support provide end-to-end visibility into service performance through a web portal.</p>

03 Key Benefits

	<p>Dedicated Bandwidth & High Security</p> <p>A perfect solution for companies that require dedicated bandwidth and data privacy. CT provides physical isolation between customers, exclusive bandwidth of high security and superior network performance.</p>
	<p>Flexibility in Bandwidth, Access Options & Optional Service</p> <p>A wide range of bandwidth options ranging from 2M and 10G, and a variety of access options including Fast-EGigE and 10GELAN interfaces. Customers may also choose to add multi-path routing with protection service for higher reliability.</p>
	<p>Service Changes with No Downtime</p> <p>Customers have new business needs as their business evolves. They can scale their networks using IEP without service interruption.</p>
	<p>Easy Deployment with Cost Benefits</p> <p>Uses standard and widely applicable Ethernet interfaces without the need for new equipment investment. Enables simple network upgrading and short delivery time.</p>

04 Overseas points of presence

